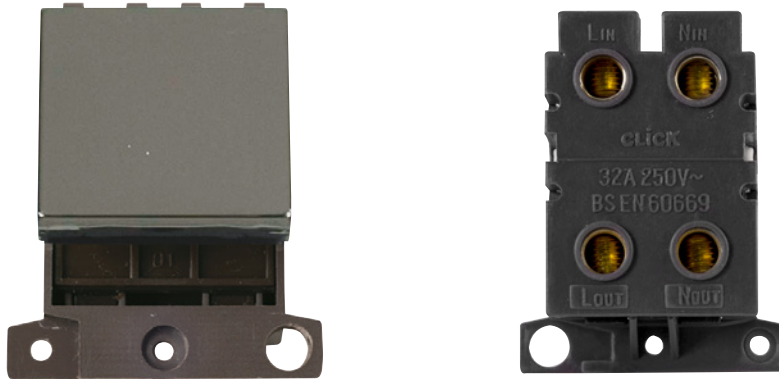


Technical Specification

Product Code: MD032BN

Description: 32A Double Pole Switch Module



General Information

Dimensions	41mm (W) x 52.5mm (H) x 22mm (D)
Aperture Dimensions	32mm (W) x 31.5mm (H)
Finish	Black Nickel
Materials	Rocker Switch: Urea Rear Housing: Nylon Switch Cover: Stainless Steel Terminals: Brass Terminal Screws: Steel & Yellow Passivated Contacts: Silver "on-lay" Copper / Brass Internal Busbars: Formed Pressed Brass
Maximum Voltage	250V 50Hz
Load Rating	32A
Terminal Size	5.6mm \varnothing
Terminal Torque	2.5Nm
Terminal Capacity	4 x 2.5mm ² or 2 x 4mm ²
Back Box Depth	Dependent On Plate Used
Operational Temperature	-5°C to +40°C
Warranty	10 Years
Standards	BS EN 60669-1:1999 +A1:2002 +A2:2008

Additional Information

Ensure that the mains supply is isolated before commencing installation and refer to the circuit diagram with the relevant product.
Bare earth cables must always be covered with appropriate sleeving and wired to the earth terminal.